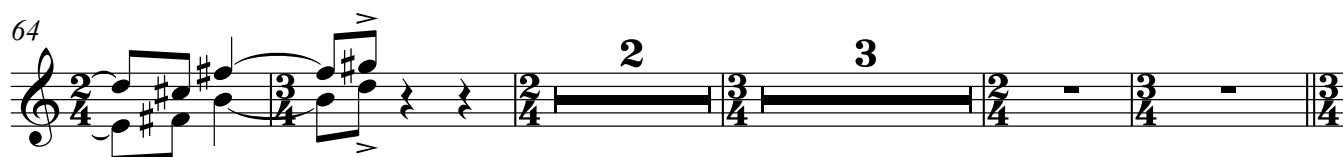
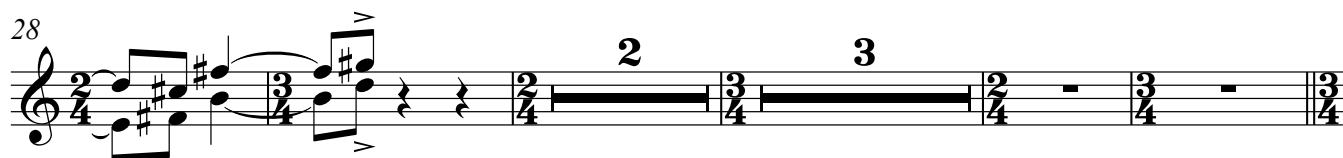
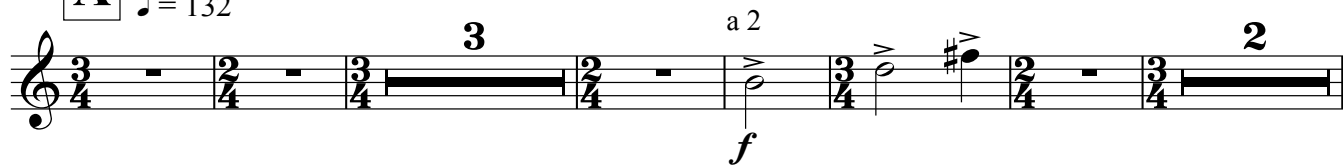


1. Footnotes

Charlie Barber

A Bright, rhythmic
♩ = 132

73 **C**

73 **C** *f* *mf* *mf* *a 2*

81 *f*

90 *p* *f*

100

2. Pasacalle (Street Dance)

Con passione e grande moderazione

109 **A** $\text{♩} = 120$

109 **A** *2* *6*

B

119 *2* *6*

129 **C** *pp*

139 **D**

146 **E**

153 **F**

165 **G**

170 **H**

175 **I**

182 **J** *Meno mosso*

201 **K**

f

mp agitato

mp

f

Meno mosso

3. Terpsichore in Sneakers

♩ = 136

208 Low strings

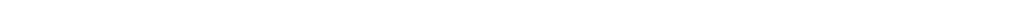
A

[illegible]

216

The image shows a single-measure rest in 3/4 time. The notation consists of a treble clef, a 3/4 time signature, and a single measure containing a whole rest. The measure is divided into three equal parts by vertical lines, representing the three eighth notes of the 3/4 time signature.

226



Exercise 226 is a single-staff piece in treble clef. It consists of a sequence of rests in the following time signatures: 2/4, 3/8, 3/4, 2/4, 3/8, 3/4, 2/4, 3/8, 3/4, 2/4, and 3/8. The piece concludes with a double bar line.

[illegible][illegible]

254

cresc. *ff*

264 a 2

ff *ben marc.*

271

cresc.

Trumpet in B♭

278 **D**

The musical score for 'D' is written on a single staff. It begins with a treble clef, a key signature of one sharp (F#), and a 3/8 time signature. The first measure contains a quarter note on D4, followed by a quarter rest. The second measure contains a quarter note on D4, followed by a quarter rest. The third measure contains a quarter note on D4, followed by a quarter rest. The fourth measure contains a quarter note on D4, followed by a quarter rest. The fifth measure contains a quarter note on D4, followed by a quarter rest. The sixth measure contains a quarter note on D4, followed by a quarter rest. The seventh measure contains a quarter note on D4, followed by a quarter rest. The eighth measure contains a quarter note on D4, followed by a quarter rest. The ninth measure contains a quarter note on D4, followed by a quarter rest. The tenth measure contains a quarter note on D4, followed by a quarter rest. The eleventh measure contains a quarter note on D4, followed by a quarter rest. The twelfth measure contains a quarter note on D4, followed by a quarter rest. The piece ends with a double bar line.

288

f *ff* *mf* *mf*

297

E

f

307

a 2

f

316

f *mf*

324

324

325

326

327

328

329

330

f

Dance Works for Orchestra - Charlie Barber

6

Trumpet in B \flat

337 a 2

f *cresc.*

341 **G**

ff *p* *f*

349

357 a 2

ff

364

f *ff*